



CHROME WELD™ GLIDE is a premium-grade overlay plate, Blanchard ground to a polished, non-stick surface to reduce material adherence. The low coefficient of friction reduces sticking, carryback, material hang-up, lowers energy consumption and aids dust suppression in many applications including chutes, hoppers, mobile equipment, and dust control systems. It is produced with a mild steel base plate and hardfaced/overlayed with our proprietary CHROME WELD 600 wire.

MECHANICAL INFORMATION

- Hardness ranges from 58-62 HRC, based on weld deposit thickness
- Remains abrasion resistant at temperatures up to 1100 F (593 C)
- Overlay is a composite of chromium iron carbides in a chromium austenitic matrix
- Surface exhibits hairline cracks which is a natural stress-relieving phenomenon essential to the performance of the plate enabling it to be formed and rolled without damage

SIZES

- Standard Plate Size is 90" x 120" (2.29m x 3.05m)
- Standard Thickness Range from 1/4" on 1/4" (6mm on 6mm) through 1/2" on 1" (12mm on 25mm)
- Custom Plate Sizes and Thicknesses are available
- CHROME WELD overlay covers entire plate surface

FABRICATION INFORMATION

WELDING

- Weld substrate to base using JADCO FUSION UNIVERSAL or equivalent weld wire/rod
- Liner plates can be plug welded to base plate
- When using welded studs, stainless steel studs are recommended
- All weld seams, plug weld holes, bolt holes and all joints exposed to wear should be protected with a cap weld of JADCO FUSION Hardfacing Wire

CUTTING

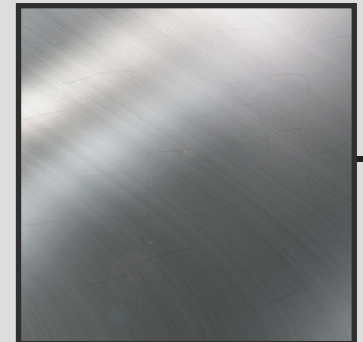
- Cut with Plasma, Air Arc, Abrasive Saw or Waterjet

MACHINING

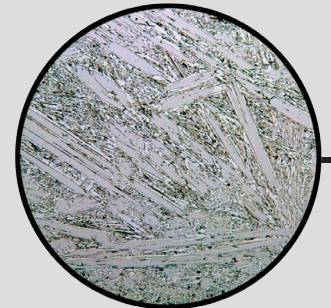
- CHROME WELD cannot be machined by ordinary methods
- Overlay surface may be finished by grinding
- Countersunk holes may be produced using EDM, Plasma or Carbon Arc gouging
- Pre-machined inserts or studs may be added as an alternative fastening option

COLD BENDING

- When using a press brake, forming should be perpendicular to the weld pass direction
- Plate rolling should be performed in the direction of the overlay beads
- Forming CHROME WELD to the outside of a radius may cause cross-check cracks to open. These cracks may require post fabrication weld repair using JADCO FUSION Hardfacing Wire



CHROME WELD GLIDE
ULTRA-SMOOTH SURFACE



ETCHED MICROGRAPH @ 200X

TYPICAL CHEMISTRY PERCENTAGE

2 LAYER DEPOSIT

Carbon (C) 4.5 - 6	Chromium (Cr) 25 - 30	Manganese (Mn) 0 - 2	Silicon (Si) 0 - 2	Iron (Fe) balance
-----------------------	--------------------------	-------------------------	-----------------------	----------------------



167 Evergreen Mill Road, Harmony, Pennsylvania 16037 USA
1+ 724.452.5252 • sales@jadcomfg.com • jadcomfg.com

REV. 01
11.22.23